

Operating Manual for

POWER ANALYSER & METER SMC 118

Complete version 2.0

Contents

1	General Description	1
1.1	Version 2.0 improvements	1
1.2	Characteristic features	2
1.3	Types and accessories	3
2	Operating the Meter	7
2.1	Safety requirements when using SMC 118	7
2.2	Installation of the instrument	7
2.2.1	Supply voltage	8
2.2.2	Measured voltage	8
2.2.3	Measured currents	8
2.2.4	Communication peripherals	8
2.2.5	Outputs and inputs	10
2.3	Detailed configuration of SMC 118 on a PC	10
2.3.1	Installation (fig.10)	13
2.3.2	Date and time (fig. 11)	15
2.3.3	Aggregation (averaging, fig. 12)	16
2.3.4	Communication (fig. 13)	16
2.3.5	Inputs & Outputs (fig. 14)	17
2.3.6	Memory Assignments (fig. 15)	18
2.3.7	Main archive configuration (Archiv 1, fig. 16)	18
2.3.8	Electricity meter (fig. 17)	20
2.4	Measurement ID configuration	21
2.5	Downloading data to PC	21
2.6	Energy meter readings	22
2.7	Embedded Webserver	22
3	Functional description	24
3.1	Instrument construction	24
3.2	Control	24
3.2.1	Machine status	24
3.2.2	LED codes	24
4	The Method of Measurement and Evaluation of Individual Variables	26
4.1	Basic quantities (RMS)	26
4.2	Powers and power factor (PF)	26
4.3	Harmonic distortion of voltages and currents	27
4.4	Symmetrical components	28
4.5	Aggregation and recording	28

5	Technical Specifications	29
5.1	Basic Parameters	29
5.2	Measured Quantities	30
5.3	Inputs and Outputs	33
5.4	Power Quality and Energy Management	34
5.4.1	IEC 61000-4-30, 61000-4-15, 61000-4-7:	34
5.4.2	EN 50160	35
5.5	IEC 61557-12: Classification of the power monitoring instrument	35
6	Maintenance, Service, Warranty	39

1 General Description

The SMC 118 is specially designed for monitoring of energy and power quality in advanced power systems and smart grids. It is intended to be used mostly for DIN rail mounting. This display-less design with multiple communication options is suitable for a wide spectrum of automation tasks in modern buildings, distributed power generation, remote supervision of the infrastructure and also remote load management. Absence of local panel controls (display and keyboard) limits possibilities for hostile user interaction. To protect the actual setup and collected data each instrument can be locked by a custom pin. Inputs and outputs can be custom programmed for basic local control applications. It uses standard RS-485 serial line for communication with remote control systems. Optionally it can be equipped with other communication peripherals such as secondary RS-485 or M-Bus communication line, or USB, WiFi and Ethernet interface.

It is equipped with one voltage input and two, four or eight current inputs. The instrument can be also supplied with for current transformers with X/100 mA ratio, for special Hall probes (to measure DC or AC+DC currents) with $\pm 4\text{ V}$ output, or Sxxx and Pxxx option for external through-hole or clamp-on current sensors for direct measuring up to 2400 A nominal current according to the type of the current transformer.

Warning ! The X/100mA, Sxxx and Pxxx, X/ $\pm 4\text{ V}$ options are specially designed to be used only in combination with provided external current sensors which are supported with the respective option.



1.1 Version 2.0 improvements

- advanced calibration and higher precision
- four quadrant active and reactive electricity meter
- improved, more precise and continuous measurement of harmonic phasors (amplitude, phase)
- advanced time synchronization options: NMEA, PPS, PPM, power frequency lock
- special rugged current inputs X/100 mA
-
- optional expansion modules USB, WiFi and ZigBee possible
- modular firmware - Power Quality, ModBus Master, Ethernet-Serial (only for instruments, which have booth interfaces) and General Oscillogram modules
- *PQ module*: power quality analysis according to EN 50160 ed. 3.
 - voltage and current measurement class S according to IEC 61000-4-30 ed. 3
 - inter-harmonics (IEC 61000-4-30 ed. 3, 61000-4-7 ed. 2)
 - flicker severity indices (P_{inst} , P_{st} a P_{lt} class F3 as defined in IEC 61000-4-15 ed. 2)
 - voltage events - interruptions, dips and swells
- *RCS module*: measurement, analysis and recording of the mains signaling voltage signals

1.2 Characteristic features

Connection and Measurement

- one measuring voltage input L_1 towards neutral
- up to eight current inputs $I_1..I_8$
- current input options
 -
 - special wire-through (Pxxx) or split-core (Sxxx) current probes for direct measurement - defined by actual type for $I_{nom} = 5 A .. 600 A$ (table 1).
 - option X/100mA for indirect measurement with special current transformers (nominal secondary current up to 100 mA)
 -
 - optional X/ $\pm 4V$ is a custom input for probes with 4V nominal output - usually Hall probes for DC and AC+DC measurement.
 - option NOCT measures only voltages, does not have any current inputs. It is possible to use it as a smart transducer and relay, with memory, to analyse frequency, voltage, harmonics, unbalance and voltage quality (with PQ module).
- two digital inputs (option D)
- single relay or impulse output (option R or I)
- features can be upgraded via external I/O modules (with ModBus Master module)
- power supply:
 - option U: $75 \div 510 V_{AC}$ or $85 \div 350 V_{DC}$
 - option L: $24 \div 48 V_{AC}$ or $20 \div 75 V_{DC}$
 - option S: $12 \div 24 V_{AC}$ or $9 \div 36 V_{DC}$
- 128 samples per period, voltage and current inputs are read continuously without any gaps
- 64 voltage and current harmonics
- evaluation of all usual three-phase and single-phase quantities such as powers (active, reactive, apparent, distortion, fundamental), power factors, harmonics and THD of voltages and currents etc.

Registration of Measured Data

- built-in real-time clock with battery backup
- flash memory to record the measured data with a capacity of 512MB
- aggregation interval from 200 milliseconds to 24 hours
- records voltage outages

Transfer and Evaluation of Recorded Data

- software ENVIS 1.2 or higher available for download free of charge for configuration and data analysis
- system service ENVIS.Online for live data recording
- primary RS-485 interface for data transmission, device configuration and firmware upgrade
- can be equipped with Ethernet (option E), secondary RS-485 (option B), M-Bus interface (option M), USB (option U, W, Z), WiFi or ZigBee (option Z).

Supported Firmware Modules

- Power Quality (PQ) — extends the measured quantities with inter-harmonics, flicker severity and 3s ripple control signal level. New PQ main and voltage events archives are added. With PQ module the SMC 118 serves as a fully compatible class S power quality analyzer.
- General Oscillogram (GO) — Adds a feature that allows recording of raw signal samples of voltage and current.
- Ripple Control Signal (RCS) — analyses ripple control signal voltage levels and allows .

1.3 Types and accessories

The SMC 118 is available in several configurations according to the customer requirements¹. See the ordering scheme on figure 1.

¹Complete and most up to date list of optional and other accessories are available on request from the device vendor.

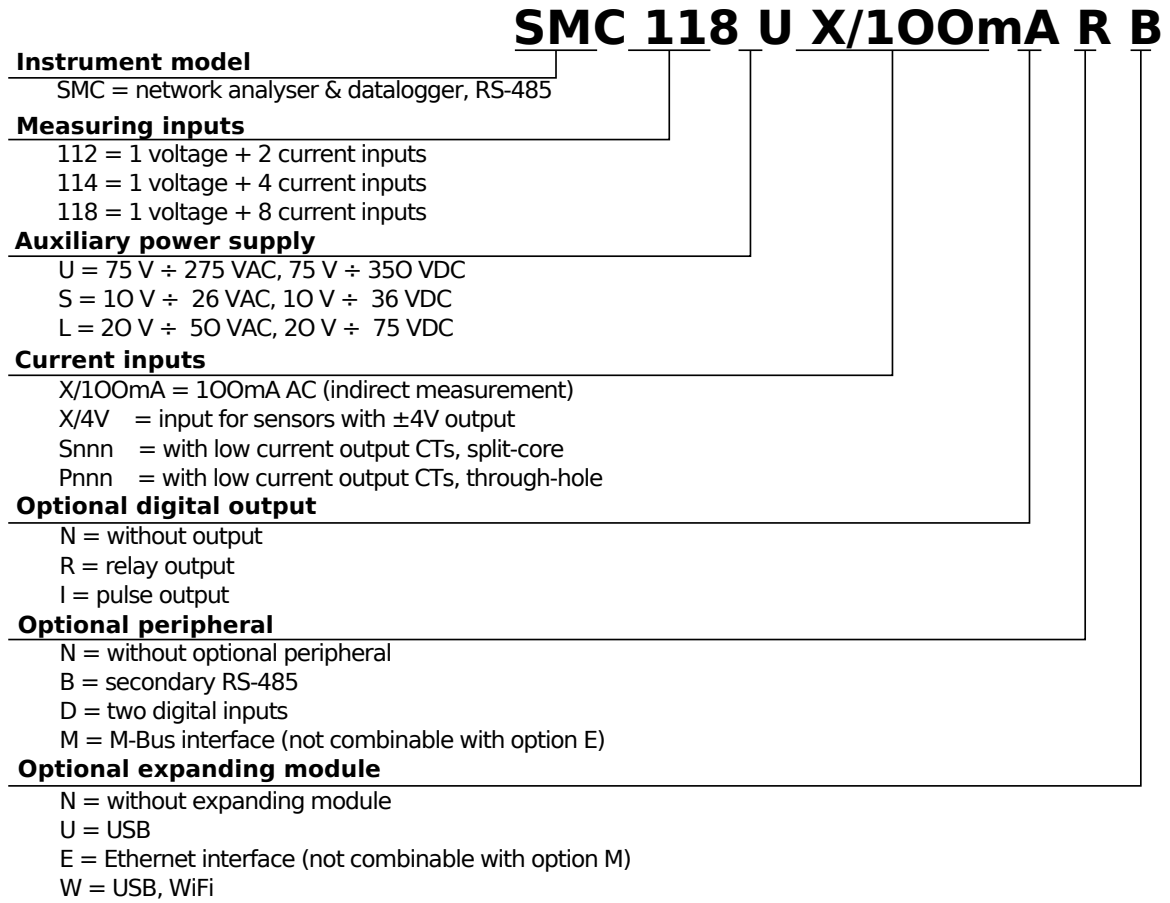


Figure 1: Schematics of the SMC 118 ordering options and variants. It includes special codes for proper current and voltage rating options.

In table 1 there are dimensions and weights of Sxxx and Pxxx current sensors for special current input variants. Parameter d is inner diameter for a measured conductor. Parameters x , y , z are external dimensions and g is weight of a sensor.

Table 1: Physical dimensions of special, supplied current sensors for **devices with Sxxx** options. See chapter 2.2.3.

Option	Model	Inom [A]	d [mm]	Connection	Dimmension [mm]
S005	JC10F	5A	10mm	Terminal	50×23×26
S015	JC10F	15A	10mm	Terminal	50×23×26
S025	JC10F	25A	10mm	Terminal	50×23×26
S035	JC10F	35A	10mm	Terminal	50×23×26
S050	JC10F	50A	10mm	Terminal	50×23×26
S075	JC16F	75A	16mm	Terminal	55×30×31
S100	JC16F	100A	16mm	Terminal	55×30×31
S150	JC24F	150A	24mm	Terminal	75×45×34
S200	JC24F	200A	24mm	Terminal	75×45×34
S250	JC24F	250A	24mm	Terminal	75×45×34
S300	JC36S-3	300A	36mm	Terminal	91×57×41
S400	JC36S-3	400A	36mm	Terminal	91×57×41
S500	JC36S-3	500A	36mm	Terminal	91×57×41
S600	JC36S-3	600A	36mm	Terminal	91×57×41

Table 2: Physical dimensions of special, supplied current sensors for **devices with Pxxx** options. See chapter 2.2.3.

Option	Model	Inom [A]	d [mm]	Connection	Dimmension [mm]
P005	JP3W	5A	7	Wire	27×24×11
P015	JP3W	15A	7	Wire	27×24×11
P025	JP5W	25A	13	Wire	41×37×14
P035	JP5W	35A	13	Wire	41×37×14
P050	JP5W	50A	13	Wire	41×37×14
P075	JP5W	75A	13	Wire	41×37×14
P100	JP5W	100A	13	Wire	41×37×14
P150	JP5W	150A	13	Wire	41×37×14
P200	JP6W	200A	19	Wire	51×49×20
P250	JP6W	250A	19	Wire	51×49×20
P300	JP6W	300A	19	Wire	51×49×20

Table 3: Selected parameters for **option X/100mA** for indirect measurement with special types of supplied 100mA CT. See chapter 2.2.3.

Split-Core Model	Inom [A]	d [mm]	Connection	Dimmension [mm]	Overvoltage Category
JS17F – Inom/100mA	050, 100 125, 150	17	Terminal	64×33×34	600V CAT III
JS17S – Inom/100mA	200	17	Terminal	64×33×34	600V CAT III
JS24F – Inom/100mA	200	24	Terminal	75×45×34	600V CAT III
JS24S – Inom/100mA	250, 300	24	Terminal	75×45×34	600V CAT III
JS36S – Inom/100mA	300, 400 500, 600	36	Terminal	91×57×40	600V CAT III
JSC-01 – Inom/100mA	250, 400	38×32	Wire	93×92×39	600V CAT III
JSC-02 – Inom/100mA	400, 600, 800 1000, 1200	73×62	Wire	128×124×39	600V CAT III
JSC-03 – Inom/100mA	800, 1000, 1200 1600, 2000, 2400	141×62	Wire	196×124×39	600V CAT III

Table 4: Selected parameters for **option X/4V** for indirect measurement with special types of supplied CT (through hole/solid core Hall probes) with nominal output voltage ± 4 V. See chapter 2.2.3.

Model	Inom [A]	d [mm]	Connection	Dimmension [mm]	Construction
JHAO – InomCA	50, 75, 100, 150, 200, 300, 400, 500, 600	22	MOLEX 5045-04AG	70×40×20	Through-Hole
JHAO – InomCB	50, 75, 100, 150, 200, 300, 400, 500, 600	30	MOLEX 5045-04AG	78×48×20	Through-Hole
JHAO – InomGA	50, 75, 100, 150, 200, 300, 400, 500, 600	20	MOLEX 5045-04AG	40×30×30	Through-Hole

Table 5: Parameters for **option X/4V** for indirect measurement with special types of supplied CT (clamp-on/split core Hall probes) with nominal output voltage ± 4 V. See chapter 2.2.3.

Model	Inom [A]	d [mm]	Connection	Dimmension [mm]	Construction
JS10NH – Inom	5,10,15,20,25,50	10	Wire	41×24×27	Split-core
JS16NH – Inom	75,100	16	Wire	45×30×32	Split-core
JS24NH – Inom	150, 200	24	Wire	65×45×34	Split-core
JS24SH – Inom	250, 300	24	Wire	65×45×34	Split-core
JS36SH – Inom	400, 500	36	Wire	83×57×40	Split-core

2 Operating the Meter

2.1 Safety requirements when using SMC 118

Warning !: When working with the instrument it is necessary to perform all necessary measures for the protection of persons and property against injury and electric shock.



- The device must be operated by a person with all required qualifications for such work and this person must know in detail the operation principles of the equipment listed in this description!
- When the device is being connected to the parts which are under dangerous voltage it is necessary to comply with all the necessary measures to protect users and equipment against injury with electrical shock.
- Person, performing the installation or maintenance of the instrument must be equipped with and must use personal protective clothing and tools.
- If the analyzer is used in a manner not specified by the manufacturer, the protection provided by the analyzer may be impaired.
- If the analyzer or its accessories appear to be impaired or not functioning properly, do not use it and send it in for repair.

2.2 Installation of the instrument

Natural air circulation should be provided inside the distribution board cabinet, and in the instrument's neighborhood. Especially underneath the instrument, no other instrumentation that is source of heat should be installed or the temperature value measured may be influenced. A connection wire's maximum cross section area is 2.5 mm^2 in case of all screw terminals.

The SMC 118 is primarily intended for DIN-rail mounting. Dimensions of the instrument are on figure 2. There are also positions marked with dash dot lines of holes for wall-mounting with three screws.

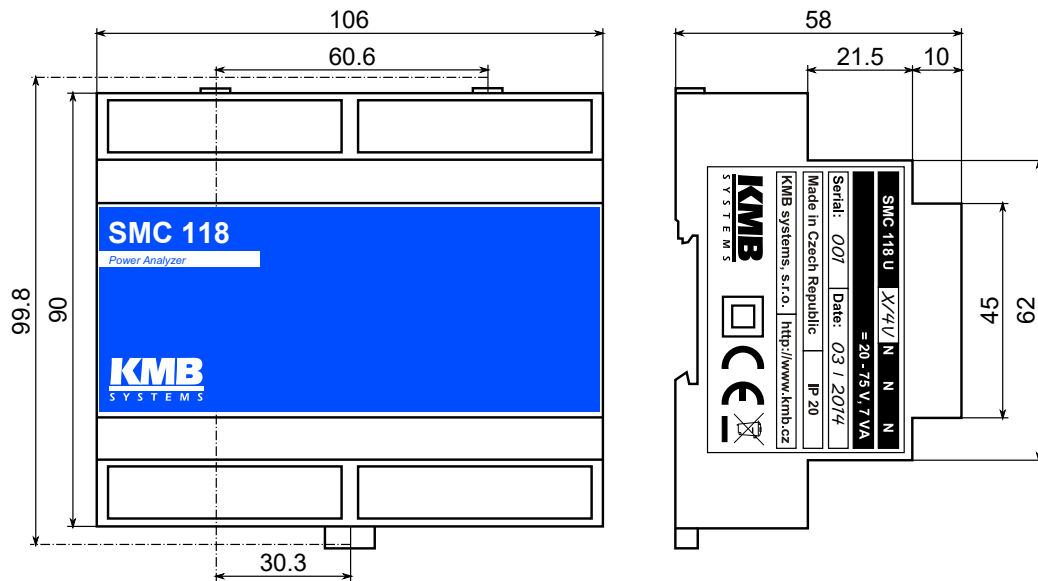


Figure 2: Dimensions of the SMC 118 analyzer.

2.2.1 Supply voltage

Power supply voltage (options in ch. 5) must be connected to the terminals X1 and X2 via a circuit breaking device (power switch – see installation diagram on figure 3). It has to be located left to the instrument and reachable by the operator. The circuit breaking device must be identified as the equipment power disconnection switch. A circuit breaker of the nominal value 1 A is a convenient circuit breaking device. Its function and position has to be clearly identified (symbols ‘O’ and ‘I’ acc. to IEC EN 61010-1). Internal power supply is galvanically isolated from internal circuits.

2.2.2 Measured voltage

The measured voltage is connected to the terminal L1. Connect the neutral wire to the terminal N. Voltage measurement inputs are connected with internal circuits over high impedance.

It is suitable to protect the measured voltage lines for example with 1A fuses of the required rating. Measured voltages can also be connected via instrument voltage transformers. A connection cable maximum cross section area is 2.5 mm^2 for voltage terminals.

2.2.3 Measured currents

For proper current measuring the current sensors must be installed with correct orientation and polarity. Figure 3 illustrates such a connection of various current transformers in LV network. Intended direction of power flow is from left (source) to right (load). It is highly recommended to verify correctness of wiring and polarity of currents with phasor diagram in Actual Data window of the ENVIS.Daq application.

The current inputs are directly connected with internal circuits. Inputs I1,I2,...,I8 and C are connected through shunt resistors (or divider in case of X/4V option). A connection cable maximum cross section area is 2.5 mm^2 .

Warning !: Current inputs can not be used for direct current measurement. Connection of unsupported type of current transformer such as the common type with 5A or 1A secondary to an instrument is strictly forbidden! The instrument can be seriously damaged!

Warning !: Do not connect the current input signals with neither ground nor other potential! Otherwise, measurement accuracy can be affected or the instrument can be damaged!

Always use only correctly rated measurement current transformers (such as $\pm X\text{ mA}$ or $\pm 4\text{ V}$) which were originally supplied with the actual instrument.

2.2.4 Communication peripherals

All peripherals stated below are galvanically isolated from the rest of the instrument and from each other.

USB (optional) communication port for USB slave is located on the front panel. This communication port is intended for easy local configuration and fast download of archived data to the local PC. Use the supplied USB cable only (USB-A/mini). SMC 118 is a USB 2.0 slave device. For correct operation it needs a driver installed in your operating system (see the ENVIS user guide for more info).

Ethernet interface (optional) 10Base-T Ethernet interface with RJ-45 connector described *ETH* is situated on a top panel of the device. Ethernet interface can be used as substitution for the primary RS-485 for connection of the device to LAN and for easy connection of remote control PC.



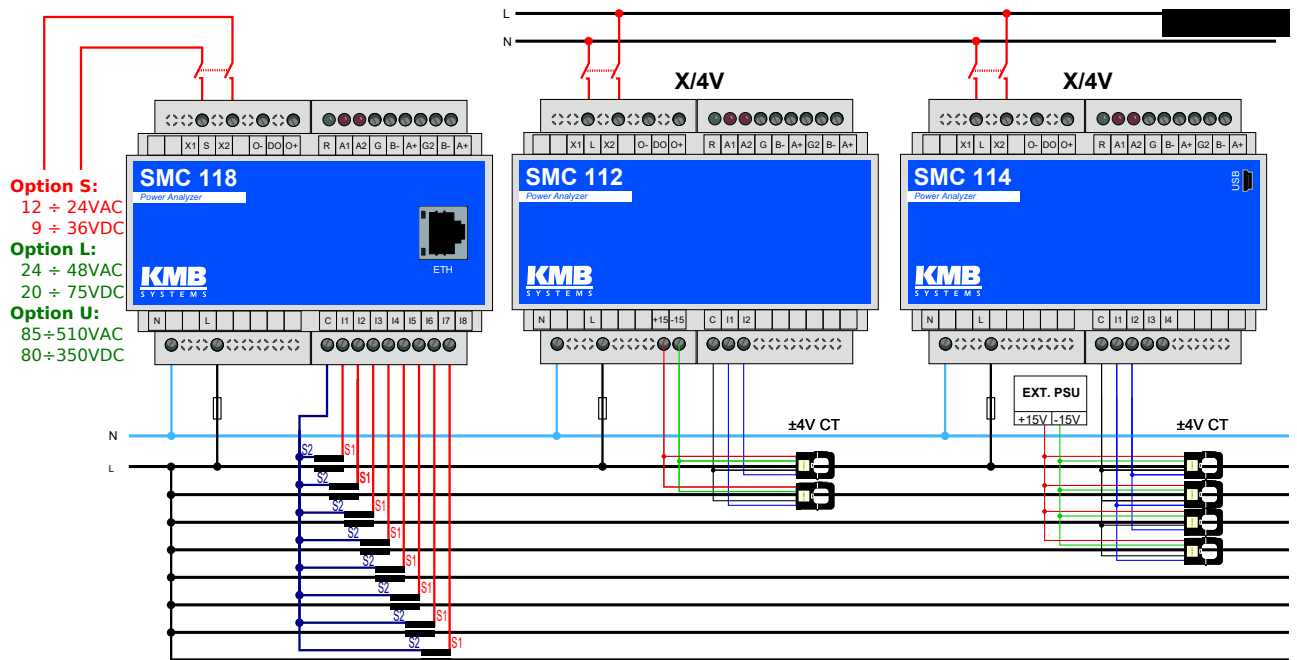


Figure 3: An example of typical installation of SMC 118 instrument in a low voltage network — left to right: with low voltage supply voltage (possible DC, AC including battery backed UPS setups); with supply from measured network. Option E for Ethernet port remote communication, option U for local USB communication port (all instruments provide RS485 serial line).

Figure 4: Special cases of connection for SMC 118 instrument: single phase three wire connection in LV network and Aron connection.

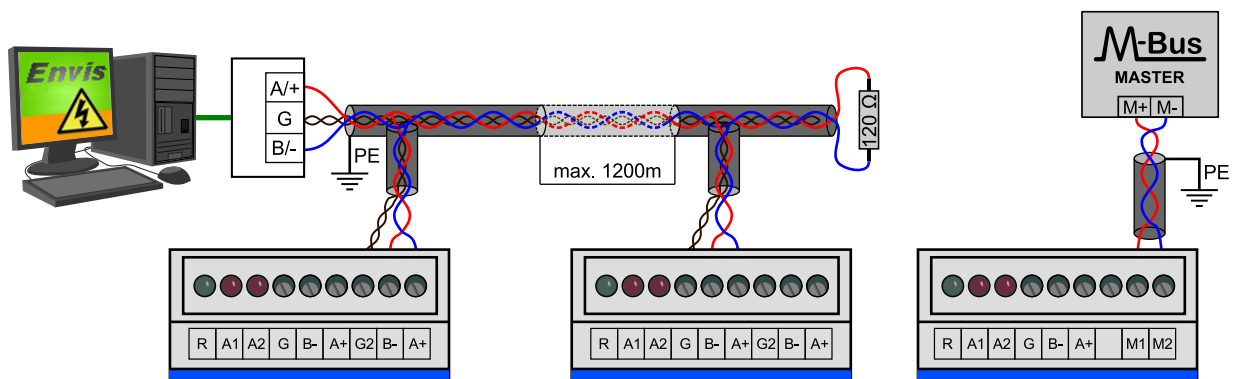


Figure 5: Typical wiring of the RS-485 communication line terminals in SMC 118 or optional M-Bus (right).

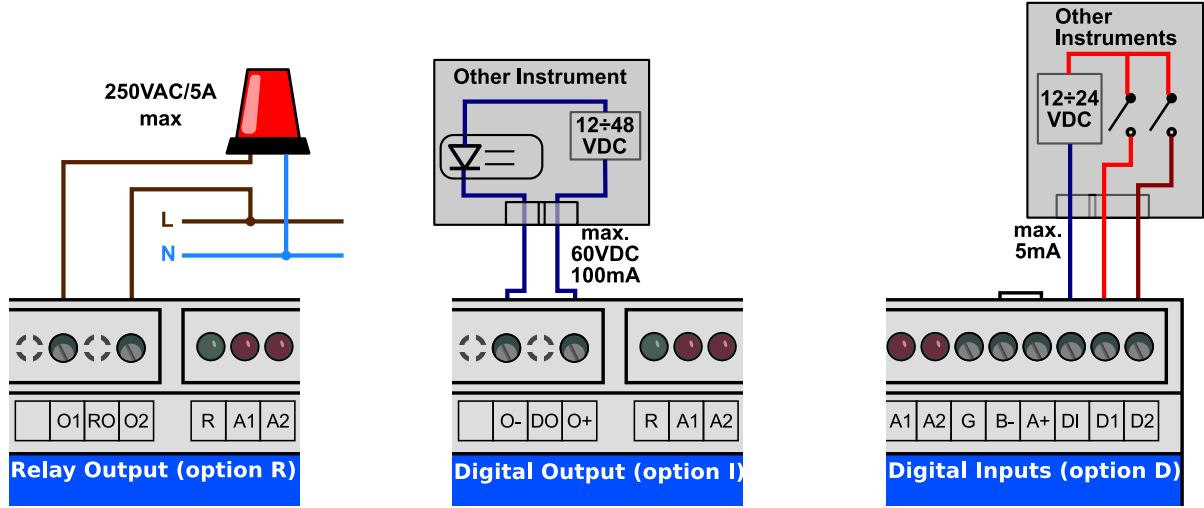


Figure 6: An example of wiring connection for inputs and outputs in SMC 118 .

RS-485 serial line serves usually as a remote communication for reading of actual data, archive downloading and device configuration. Serial RS-485 line uses terminals $A+$, $B-$ with shielding at terminal G of $COM1$ block (fig. 5). The end point of the communication line must be properly terminated with $\sim 120\Omega$ resistor.

Secondary RS-485 (optional) communication line serves for connection of external I/O modules or remote display unit. Secondary RS-485 line uses terminals $A+$, $B-$ with shielding at terminal $G2$ of $COM2$ block (fig. 5). The final points of the communication line have to be fitted with terminating resistor approx. 120Ω .

M-Bus interface (optional) provides predefined measured values to the remote M-Bus control system. the M-Bus implementation is described in a standalone *Communication Protocol Mbus* manual. Its physical interface uses terminals $M1$ and $M2$ of $COM2$ block on fig. 5 (right). Polarity of the connection is free to choose.

2.2.5 Outputs and inputs

Digital Inputs $DI1$ and $DI2$, sensitive to voltage, are using three terminals in DI block — DI is common terminal, $D1$ is first and $D2$ is second digital input. Voltage lower than $3V$ applied between DI and digital input $D1$ or $D2$ is evaluated as inactive state, voltage greater than $10V$ is evaluated as active state. On fig. 6 right there is a sample schema for connection of two external switches in series with voltage source of $24V_{DC}$.

Digital Output connected through terminals $O+$ and $O-$. There must be an external voltage source in series ($24V_{DC}$ is recommended). In case of solid state based DO outputs an external voltage supply polarity must comply with terminal poles (see fig. 6).

2.3 Detailed configuration of SMC 118 on a PC

To begin a measurement it is recommended to configure the SMC 118 instrument appropriately. This setting is done by PC with an ENVIS.Daq² application.

²The ENVIS.Daq application is used for configuration of the instrument. This software is available for download from WWW.KMB.CZ as a part of ENVIS installation package or as a standalone application. Detailed description can be found in

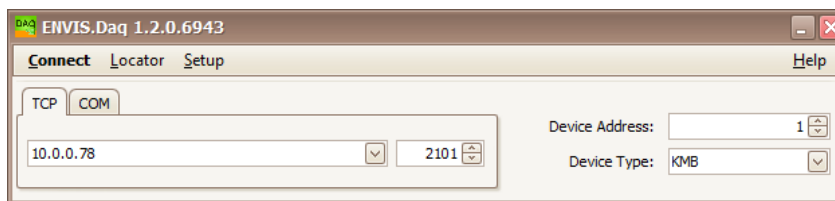


Figure 7: Main window of the ENVIS.Daq application - enter communication type, choose its parameters and click *Connect* to continue.

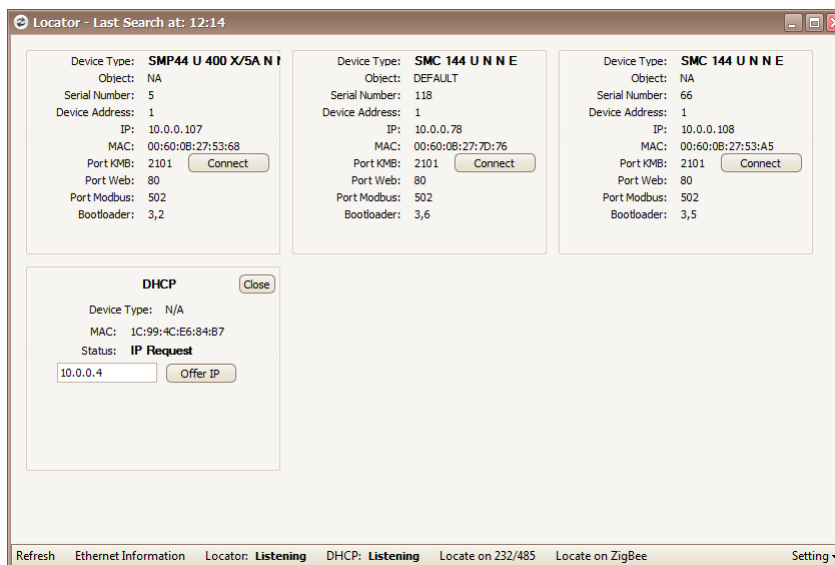



Figure 8: Window of *Locator* tool - provides automatic discovery of the supported instruments in a local network.

Warning !: This setting will erase all previously archived data in memory of the instrument. Before writing new configuration to the device make sure to backup the last measured archive. 

1. Turn on the instrument. Supply voltage will be indicated by the blinking green LED (PWR).
2. Connect the SMC 118 to a computer via USB³, RS-485 or Ethernet interface. Now the unit is ready to be configured.
3. Run ENVIS.Daq application and pick the appropriate tab for the given communication line.
4. Fill in communication line parameters. A connection form with typical parameters is shown in figure 7.
 - (a) USB: choose the correct virtual communication port from the list
 - (b) RS485: Immediately after power up the green LED is fast blinking (once per 400ms). For the first 10 seconds after power-up, device can always communicate with fixed baud rate 9600 bps and is listening on address 250. If SMC 118 does not receive any command until the interval expires, its communication port is reconfigured to the user defined parameters. During start the SMC 118 is also listening on its own address — if same baud rate as default is set, it is possible to connect to the

The ENVIS User Guide.

³If a USB instrument is connected to the PC for the first time it is necessary to install its driver in Windows. You can find the actual driver for our instruments online on the the WWW.KMB.CZ website. It is also located in the driver folder of ENVIS software installation folder, for example in: 'C:\Program Files (x86)\KMB systems\ENVIS 1.2\driver'

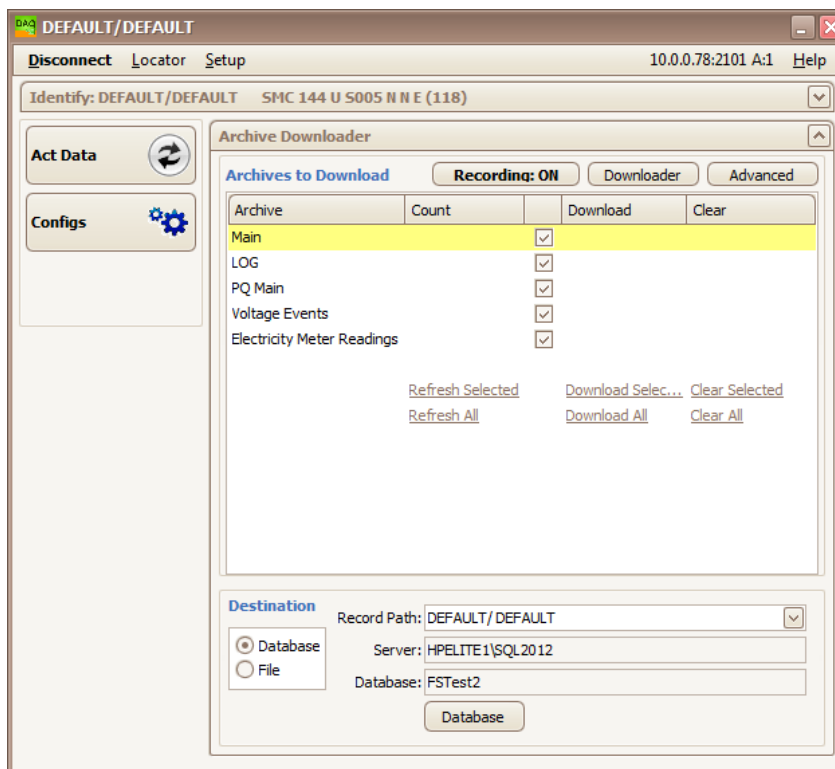


Figure 9: ENVIS.Daq application connected to the instrument.

device immediately after power-up. Otherwise, user has to wait 10 seconds before connecting with his own baud rate. End of start interval is indicated by slowly blinking green LED (once per 2 s). Select the correct serial port from a list and set up communication line baud rate.

- (c) Ethernet: enter correct IP address and port (default: 2101). If you do not know the right values you can use *Locator*⁴ (fig. 8).
 - (d) Edit an address of the instrument (Default: 1)
 - (e) Enter the device type: KMB
5. Press the *Connect* button or the *ENTER* key. application will attempt to connect to the instrument. In case of successful connection it reads the configuration from the instrument and displays new window with summary information (figure 9).
 6. Press the *Settings* button in left column. New window with actual instrument settings will be opened.

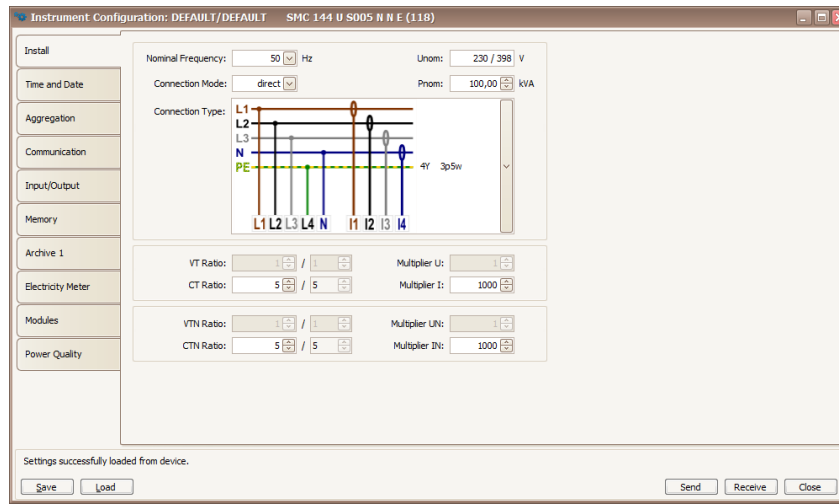
Category *Instrument Settings* includes sub-categories, sorted and grouped in various tabs. Changes in configuration are only performed in the windows application. To the instrument they are sent with a *Send* button. With button *Receive* user can re-read the stored configuration from a device. This will effectively cancel all the local modification in the application. Unwritten changes in configuration on each tab is signaled by an exclamation sign. Buttons *Save* and *Load* provide a possibility to archive the actual settings to a file.

For correct operation an appropriate configuration of at least *Installation* and *Time and Date* tab is crucial.

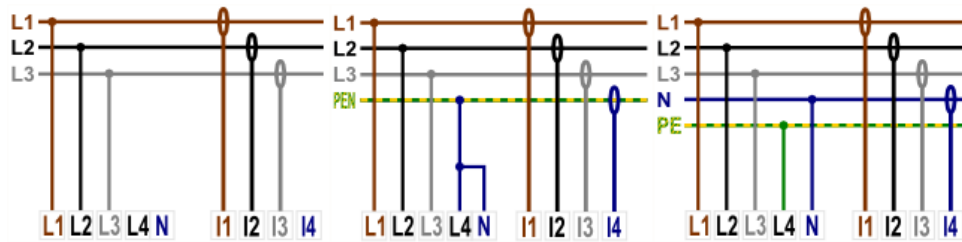
⁴Locator is a tool for automatic look-up of the instruments in a local network or on a serial line. Caution: it contains special functions such as an embedded DHCP server, which can severely interfere with the normal operation of Ethernet network. It also might need a customization of your PC firewall to work correctly.

2.3.1 Installation (fig.10)

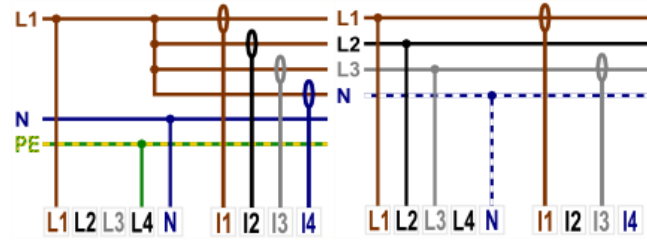
- *Nominal Frequency* - defines the nominal network frequency measured at 50 or 60 Hz. It also influences, how power quality indice are evaluated.
- *Connection Mode* - the way of connection of the instrument to the measured voltage — either direct voltage measurement or via voltage transformers (usually in a HV network).
- *Connection Type* - type of measured network according to the actual connection - three-phase star, three-phase delta or Aron connection. Supported connections schema are in fig. 10b, 10c and 10d for illustration.
- U_{NOM} , P_{NOM} (rated voltage and power) — correct configuration of these values influences relative values used on display and in condition evaluation (alarms, PQ evaluation, IO, ENVIS data processing).
 - U_{NOM} is a nominal (primary) voltage of the measured network
 - P_{NOM} is a nominal power given by the system transformer or used protection device.
- *VT Ratio*, *VTN Ratio* - sets the conversion ratio of voltage inputs for *Connection Mode: via VT* measurement. Must be set accordingly to the primary and secondary rating of the measuring voltage transformer (transfer ratio). 'VTN' designates the optional fourth voltage input, available with some *Connection Types*.
 - nominal primary voltage: default value for 'via VT' option is 22 000 V.
 - nominal secondary voltage: default value is 100 V (other common values are 110, 120, 230V)
- *CT Ratio*, *CTN Ratio* - sets the conversion ratio of current input. 'CTN' designates the fourth input, usually a neutral wire.
 -
 - For SMC 118 options X/100mA and X/20mA a nominal primary and nominal secondary current of the supplied transformer is used. Default value is 100 A/100 mA resp. 20 mA.
 - For SMC 118 options Sxxx and Pxxx **the factory default value corresponds to range of specific current input variant stated after slash** (for example *Range I: 50 / 50* for S050 or P050 option) and shouldn't be changed under normal conditions!
- *Multiplier U*: this parameter is usually not necessary. Default value is 1. In special cases it can be used to correct the ratio of measured voltage.
- *Multiplier I* - this parameter is usually not necessary. Default value is 1.
 - in case of direct current measurement (fig. 3) leave the *Multiplier I* in its default value:1.
 - in case of indirect current measurements with nonstandard conversion ratio (multiple loops of measured wire through the measuring transformer etc) specify the new ratio as a fraction⁵ to which you need to multiply the original conversion ratio to get the real measured value of current.



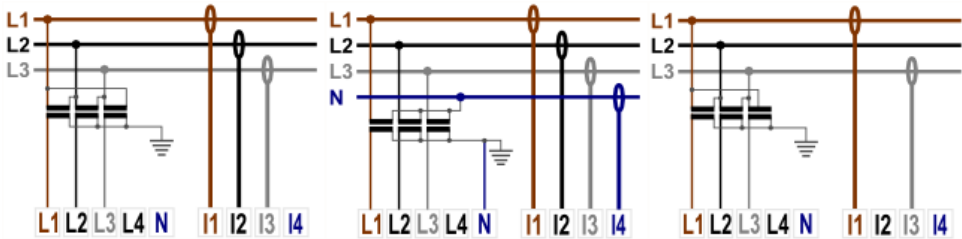
(a) Configuration of basic installation parameters in ENVIS.Daq.



(b) Typical instrument connection types for direct measurement (in LV networks).



(c) Special instrument connection types for direct measurement (in LV networks).



(d) Instrument connection types for indirect measurement — to be connected via VT (in HV networks).

Figure 10: ENVIS.Daq - configuration of the device installation.

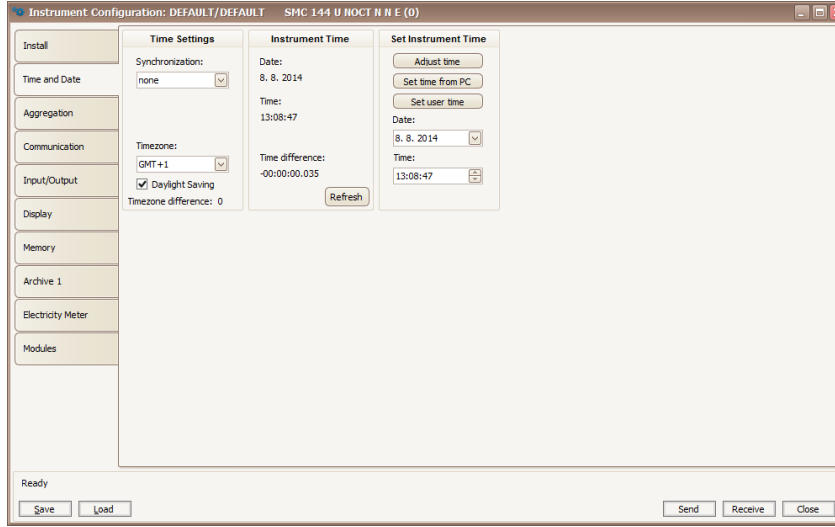


Figure 11: ENVIS.Daq - configuration of date and time options.

2.3.2 Date and time (fig. 11)

This tab contains configurations related to the instrument internal time and date settings.

Warning !: manipulation with the time configuration erases all instrument archives and related registers.



Instrument Time panel displays actual time and date in the instrument and an absolute difference to the actual time in PC. When this tab is opened for the first time the instrument time is immediately read and is periodically actualized. Button *Refresh* rereads the instrument time again.

Time Setup panel provides controls for actual modification of the time in instrument.

- *Set Time from PC* — sets the instrument time according to the clock in PC
- *Set user Time* — sets the instrument time to the manually entered value
- *Adjust Time* — aligns the instrument time to the PC time without erasing instrument memory. The operation is successful only if the time difference is less than 6 hours. Adjustment to the desired value is achieved in a way that:
 - to move time forwards it skips required number of archives
 - to move time backwards it waits with the creation of next archive until the instrument reaches the time given in setup.

Calendar Configuration defines ways of interpretation and display of time tags in instrument and in its archives:

- *Synchronization* — defines how each instrument synchronizes its time. Methods supported include:
 - *none* keeps the clock in sync with internal RTC only. This is a default choice.
 - *pulse per second* and *pulse per minute* (PPS, PPM) on the selected digital input,

⁵ If, for example, primary CT with ratio 100/5 is used, set multiplier to $\frac{100}{5} = 20$. Another example, when *Multiplier I* can be used, is winding more than one loop of measured conductor through current transformer for sensitivity extension (and range reduction). For example for 4 loops *Multiplier I* should be set to $\frac{1}{4} = 0.25$.

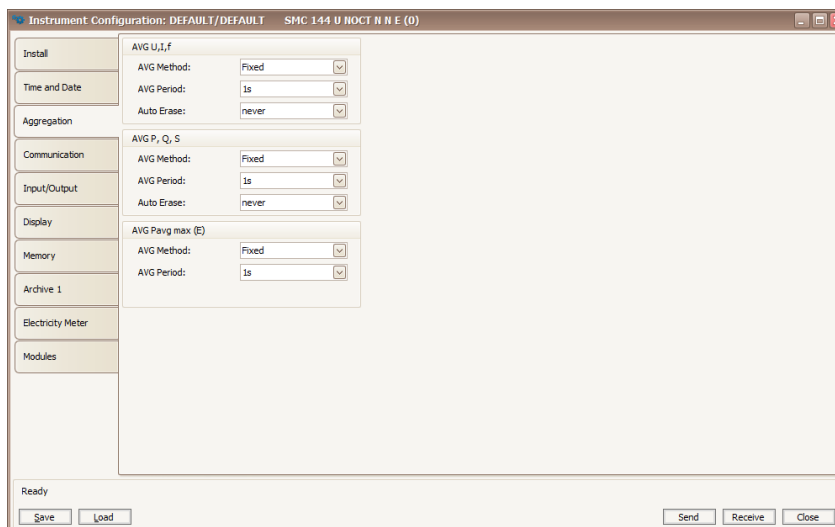


Figure 12: ENVIS.Daq - aggregation configuration defines how instrument evaluates average, minimum and maximum actual values for display and communication.

- *NMEA protocol* on a communication line - the communication port must be properly configured to receive the synchronization message (NMEA message can be also combined with precise pulse signal on serial line),
 - *NTP protocol* over Ethernet - IP address of the time server must be filled - it sends NTP time sync request to the server 5 minutes after device start and than periodically every hour.
 - *network frequency lock* - the primary clock is the RTC. Frequency is monitored over the whole month and if the observed difference becomes more than 40 seconds than it corrects the clock in the middle of the following PQ record interval.
- *Time Zone* — must be set according to the local requirements. The configuration is important for correct interpretation of the local time for tariff, for remote communication etc.
 - *Summer Time* — if set the calendar automatically adjusts itself to the change of the local time according to the season.

2.3.3 Aggregation (averaging, fig. 12)

This configuration influences algorithms used for calculation of special ModBus registers of the aggregated values. In instruments with graphical display it also influences how aggregated (AVG) values are displayed. Parameters are defined separately for primary quantities - voltages, currents and frequency, for derived quantities and specially for PavgMax. Correctly configured aggregation in an instrument allows in connection with ENVIS software to evaluate quarter-hour or hour maximal demand (power).

2.3.4 Communication (fig. 13)

Device is always equipped with at least one RS 485 port (COM1) for parametrization and data acquisition. Optionally it can be equipped with secondary RS485 port (COM2) or with Ethernet (ETH) interface.

- *Instrument Address* - assign unique address to each instrument on the same serial line.

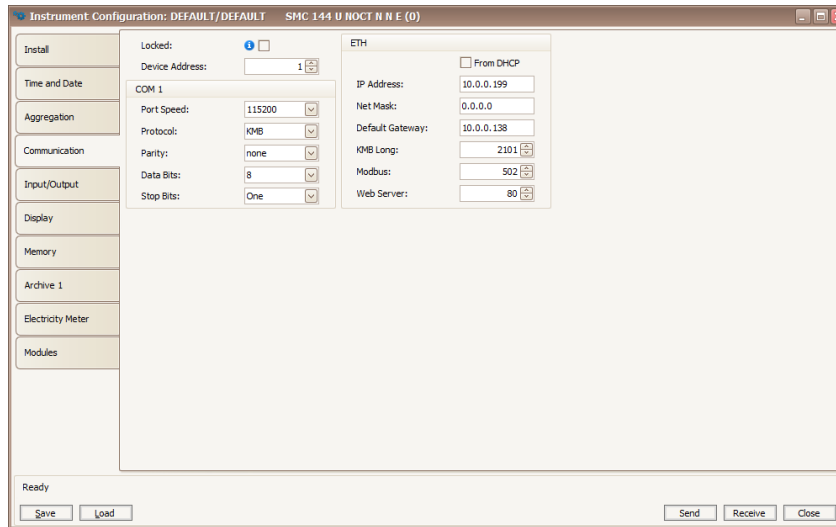


Figure 13: ENVIS.Daq - setting up communication line options.

COM1, COM2

- *Communication Speed* — speed (baud rate) of the communication line. Default value is 9600 bps.
- *Communication Protocol* — to be chosen between KMB protocol and ModBus RTU.
- *Parity* — odd, even or none. Defines behavior of the parity bit control settings.
- *Data bits* — defines number of data bits.
- *Stop bits* — defines number of re-synchronization bits after each sent character.

ETH

- *IP address* — to be specified by user or assigned via the local DHCP server.
- *Network Mask* — setting of the network mask.
- *Gateway* — setting of network gateway.
- *TCP Ports* — each port can be individually assigned a special TCP port. Default values are:
 - *KMB Long protocol*: 2101,
 - *ModBus TCP protocol*: 502,
 - *Web server*: 80.

2.3.5 Inputs & Outputs (fig. 14)

SMC 118 is assembled with two alarm leds A1 and A2 and optionally (options R, I) with one relay or SSR output O1.

- output controll logic can be programmed into the instrument

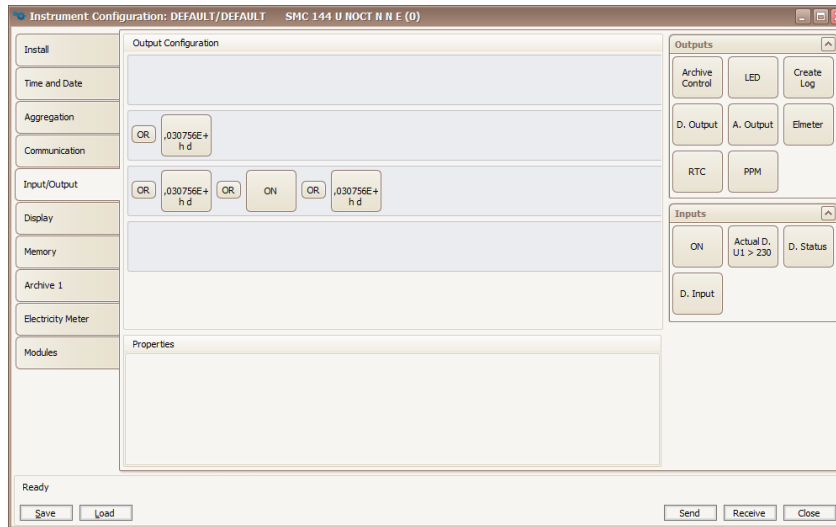


Figure 14: ENVIS.Daq - nastavení chování programovatelných vstupů a výstupů.

- any output can be configured to provide meter pulse output. In such cases the control quantity can be either active or reactive energy in each quadrant. It is necessary to correctly configure number of pulses per kWh or kvarh.

2.3.6 Memory Assignments (fig. 15)

In this config tab it is possible to partition the internal memory among different archives with the slider control or by editing the appropriate value. The capacity of the new allocations is displayed right to the slider control. Sizes of some archives are fixed and can not be modified. Allocation for the main archive is automatically adjusted according to the remaining space and user requirements for another data such as meter readings, voltage events, oscillograms etc.

2.3.7 Main archive configuration (Archiv 1, fig. 16)

Archive configuration options split into archive properties panel and quantity selection list panel.

- *Record Name* – naming the measurements helps users to identify them correctly during evaluation. For example the transformer or circuit breaker ID could be a good descriptor. Record name is a string of up to 32 characters.
- *Archive Start:*
 - *Immediately* - starts recording immediately after the instrument is turned on;
 - *Digital input* - saves records only when the digital input state is active;
 - *Preset time* - starts recording only after the given date and time.
- *Record Interval* – this aggregation interval defines the frequency of creation of the main archive readings. valid value is between 200 milliseconds (10/12 periods) and 2 hours.

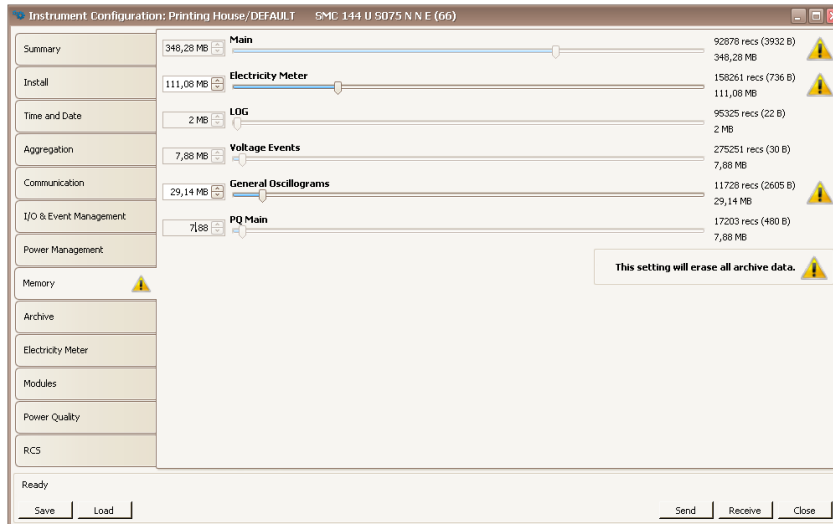


Figure 15: ENVIS.Daq - memory partitioning for each separate archive/data type.

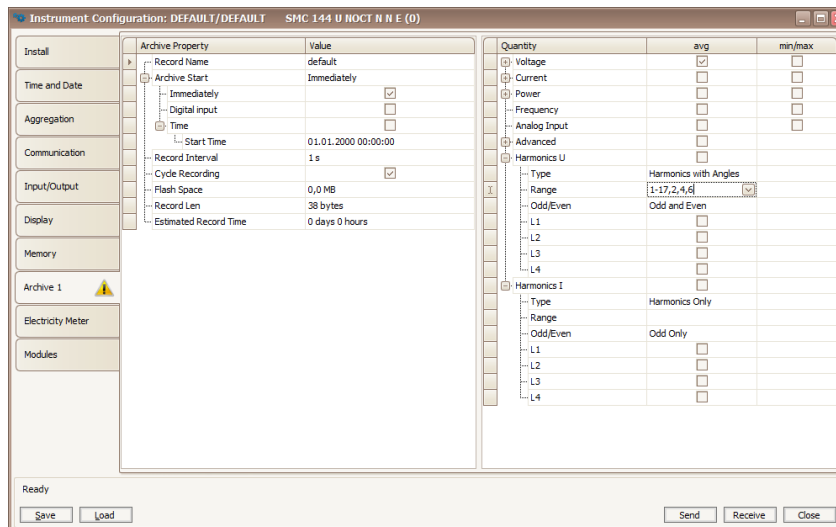


Figure 16: ENVIS.Daq - configuration of the recorded quantities for the main archive.

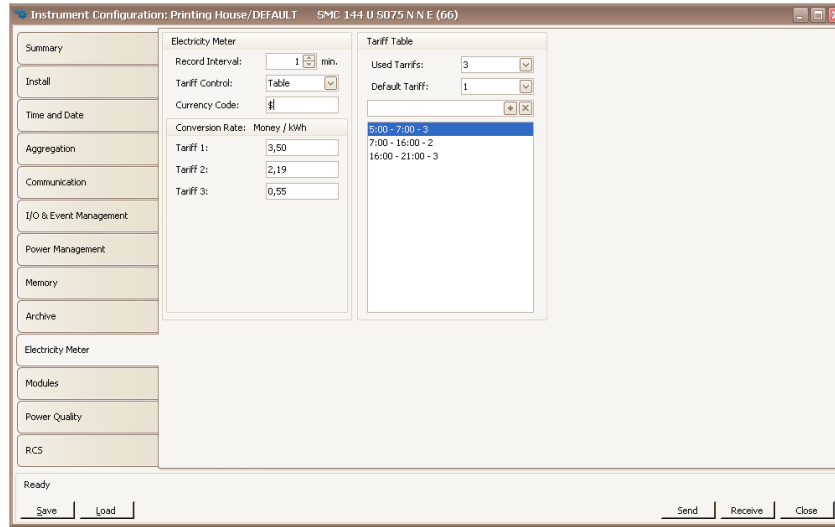


Figure 17: ENVIS.Daq - electricity meter configuration panel - tariffs, prices, etc.

- *Cycle Recording* – this switch defines what happens when main archive is fully recorded. When active, the archive continues to overwrite archives in a cyclic manner (FIFO). When disabled the recording stops and the oldest measured data is kept.
- *Flash Space* — total memory space assigned for the archive data.
- *Record Len* — actual length of the configured record.
- *Estimated Record Time* - this provides estimation of the overall capacity of the archive at the actual configuration. It is updated only after the configuration is written into the instrument and read back.
- *Quantities* — in this section user can choose quantities which will be recorded. Required values should be enabled in the *avg* or in the *min/max* column.
 - *Power*: in the *I/E* line user can choose to separately evaluate and record consumed and generated active power resp. the inductive and capacitive reactive power.
 - *Harmonics* - user chooses which data should be recorded in regard to harmonics.

2.3.8 Electricity meter (fig. 17)

SMC 118 can be used as a standalone energy meter and register for submetering applications to record four-quadrant active and reactive energies (watt- and var-hour meter).

- *Record Interval*: period of creation of the automated meter readings in memory.
- *Tariff Control* - tariffs can be controlled by user defined tariff table or by state of the input.
- *Tariff Table* - this panel configures number of tariffs, number of measured wires and time based table of tariffs.
- *Currency Code* - name of currency is used for reporting and energy audits.
- *Conversion rate*: - defines prices (rates) for energy 1 kWh for each tariff per unit of currency.

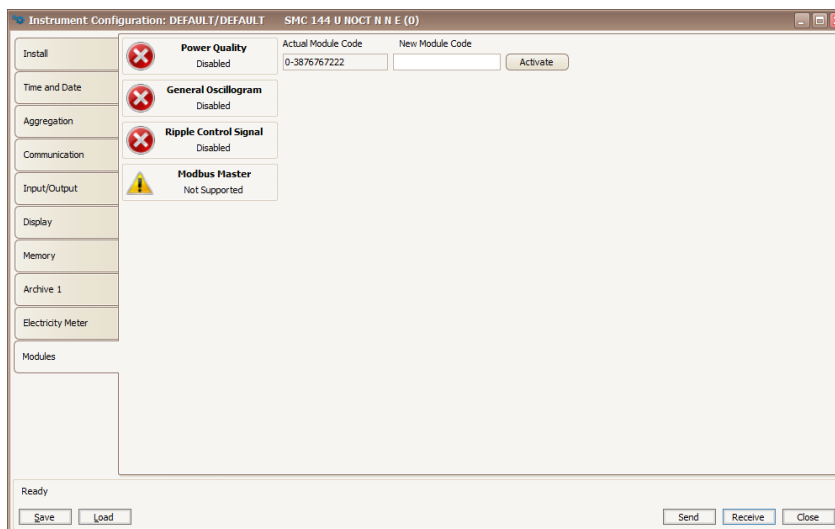


Figure 18: ENVIS.Daq - activation and deactivation of the supported special firmware options.

Firmware Modules (fig. 18) This tabs allows the user to activate or deactivate optional firmware modules by providing a valid activation code. State of each supported module is indicated.

2.4 Measurement ID configuration

This configuration can be performed in the main ENVIS.Daq window on an *Identification* panel. it is crucial for correct identification and categorization of the archived data.

- *Object* - Is a number or name of object (generally a text string), where was performed the measurement. This is a basic identification element, that will organize the measurement archive in a database record of the ENVIS program. In our case (object name is “DEFAULT”) it was retrieved directly from the instrument. It can later be adjusted manually.
- *Record Name* - The individual records in the measured object can be distinguished by their name (name of the transformer in the building). In that case “DEFAULT”. This is again a text string of maximum length of 32 characters which can be adjusted later.

To write the new values for *Object* and *Record Name* push the *Set* button in the *Identification* panel. Other informative parameters of this tab group do indicate the type of connected device (model, serial number, firmware and hardware versions etc.) and they can not be changed.

2.5 Downloading data to PC

Connect the instrument to the PC and run ENVIS.Daq application (fig. 7). Select the appropriate communication option (as described in section 2.3) and connect to the instrument. In the next screen press *Refresh All* (fig. 9). This will load and display the actual status of each supported archive.

Device Information section contains editable description and name under which the actual record is stored. *Time Frame for Other Archives* tab allows you to limit the date ranges of all archives by the time interval of the main archive. In the *Destination* section the actual storage can be selected - either to the SQL database or to

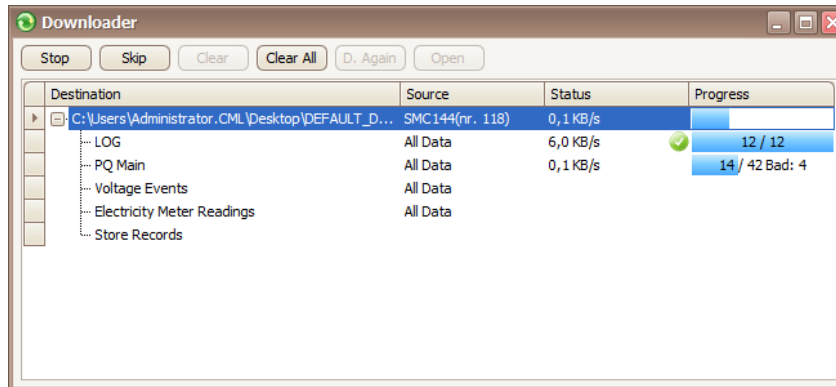


Figure 19: A window providing information about the download progress.

the file (CEA, XLS, PQDIF file formats). The check boxes in *Archives to Download* determines which specific archive(s) you want to download.

The actual download will start by pressing the *Download All* button. Progress of the data acquisition is displayed in a window as in figure 19. progress is displayed on screen. When finished the archive can be viewed in the ENVIS application. User can open the downloaded file directly from ENVIS.Daq.

2.6 Energy meter readings

SMC 118 has an embedded four-quadrant energy meter with automatic meter reading functions and multiple programmable tariffs (Time-of-Use, TOU). The instrument registers active energy (EP, EP+, EP-) and reactive energy (EQL, EQC or EQC+, EQC-, EQL+, EQL-). According to the configuration of meter (ch. 17) readings are shuffled to the respective tariffs. It automatically provides summaries per phase. For star connections and single phase measurements it can also register energy for each phase separately.

Meter data readings can be downloaded and analyzed in ENVIS or via the standard ModBus protocol in any other system.

2.7 Embedded Webserver

All of instruments with Ethernet communication option are equipped with a native embedded webserver. Over this feature all important actual main measurements, registers and instrument setting can be viewed with a standard web browser with support for HTML5. It requires to set properly the instrument remote communication parameters and to connect it to the network. Then in the web browser enter an appropriate IP address of the instrument and information from the instrument appears.

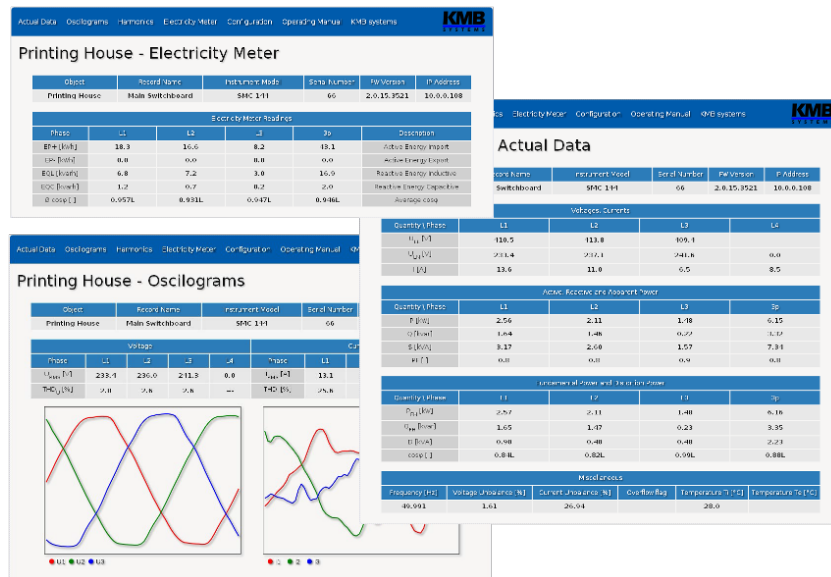


Figure 20: Sample pages of the embedded web server - actual data, electricity meter, oscillograms.

3 Functional description

3.1 Instrument construction

Figure 21: Description of the SMC 118 instrument.

1. Input connector for auxiliary power supply voltage
2. Galvanically isolated digital relay or impulse output (optional)
3. Green instrument status LED
4. Two red configurable alarm LED
5. Primary communication RS-485 interface
6. Secondary RS-485 or M-Bus interface (optional) or two digital inputs (optional)
7. RJ-45 Ethernet connector (optional)
8. Current inputs for externally connected current sensors
9. Voltage inputs for four measured voltages

3.2 Control




SMC 118 device has no control buttons. It simply works while connected to proper auxiliary voltage (see Technical specifications). Communication using ENVIS software on your PC, which is the only way, how to control SMC 118 device, was described in chapter 2.

3.2.1 Machine status



SMC 118 can be in one of three basic states indicated by green LED. Function of green LED in conjunction with 10 seconds power-up interval and fixed baud rate communication was previously described in 2.3.


3.2.2 LED codes

LED “PWR” (green) - device status:







-  (off) power supply voltage is not present, measurement is stopped
-  (slow blinking once per 2 s) normal operation, ready for connection
-  (fast blinking once per 400 ms) device is awaiting commands in fixed baud rate (see 2.3)

LED “A1” and “A2” (red) - configurable/alarm LEDs:

-  (off) configurable (e.g. alarm off)
-  (on) configurable (e.g. alarm on)

-  (blinking) configurable (e.g. electricity meter pulse output)

“PWR”, “A1” and “A2” LEDs while firmware upgrade is in progress:

-    erasing main program memory
-    receiving new firmware

4 The Method of Measurement and Evaluation of Individual Variables

Measurement includes three continuously performed processes: frequency evaluation, sampling voltage and current signals and evaluation of these sampled data.

Frequency of the fundamental harmonic voltage component is continuously measured and evaluated every 10 seconds. The measured signal is a line voltage of first phase signal modified with a low pass filter. Frequency is assessed as a percentage of the number of full cycles of the network established within each 10 seconds and the cumulative duration of full cycles.

Voltages and currents are evaluated continuously without gaps. Basic evaluation interval is 10/12 cycles of the network ($\sim 200\text{ ms}$ for both 50 Hz or 60 Hz network). All channels are sampled at the frequency of 128 samples per network cycle. Sampling is controlled by the measured frequency in channel U_1 . If the value of the frequency is in measurable range it also controls the sampling — sampling is automatically adjusted to the frequency change. Otherwise, the sampling runs according to the preset nominal frequency (50 Hz or 60 Hz). RMS voltage and currents are evaluated from the sampled values for the measuring cycle according to equations:

4.1 Basic quantities (RMS)

Line-to-Neutral and Line-to-Line voltages, currents:

$$U_1 = \sqrt{\frac{1}{n} \sum_{i=1}^n U_{1i}^2}, U_{12} = \sqrt{\frac{1}{n} \sum_{i=1}^n (U_{1i} - U_{2i})^2}, I_1 = \sqrt{\frac{1}{n} \sum_{i=1}^n I_{1i}^2}$$

where: i sample index
 n number of samples per cycle of measurement (128)
 $U_{1,i}, U_{2,i}, I_{1,i}$ individual samples of voltage and current

4.2 Powers and power factor (PF)

Active and reactive power (single phase, three phase)⁶:

$$P_1 = \frac{1}{n} \sum_{i=1}^n U_{1i} \times I_{1i}, 3P = P_1 + P_2 + P_3$$

$$Q_1 = \sum_{k=1}^N U_{1,k} \times I_{1,k} \times \sin \Delta\varphi_{1,k}, 3Q = Q_1 + Q_2 + Q_3$$

⁶The equations are valid for a three phase star connection.

where: k index of the order of each harmonic
 N highest harmonic (63)
 $U_{1,k}, I_{1,k}$ k-th harmonic of voltage and current (1st phase)
 $\Delta\varphi_{1,k}$ angle between $U_{1,k}, I_{1,k}$ (1st phase)
Apparent and Distortion power (per phase, three phase):

$$S_1 = U_1 \times I_1, 3S = S_1 + S_2 + S_3$$

$$D_1 = \sqrt{S_1^2 - P_1^2 - Q_1^2}, 3D = \sqrt{3S^2 - 3P^2 - 3Q^2}$$

Power factor (per phase, three phase):

$$PF_1 = \frac{|P_1|}{S_1}, 3PF = \frac{|3P|}{3S}$$

4.3 Harmonic distortion of voltages and currents

is continuously evaluated by FFT up to 63rd harmonic. The calculation is performed by using a rectangular window of each measurement cycle. Following parameters are evaluated from the harmonic analysis:

Fundamental (1st) harmonic of voltage and current:

$$Ufh_1, Ifh_1$$

The absolute angle of the fundamental harmonic voltage and current phasors:

$$\varphi U_1, \varphi I_1$$

The angle between the corresponding phasors of the fundamental harmonic components of voltage and current:

$$\Delta\varphi_1$$

The angle between a voltage and the corresponding current phasors of the i-th order:

$$\Delta\varphi_i$$

Total harmonic distortion of voltage and current (as defined in 61000-4-30):

$$THDU = \frac{\sqrt{\sum_{i=2}^{40} U h_i^2}}{U h_1} \times 100, THD-R_U = \frac{\sqrt{\sum_{i=2}^{max} U h_i^2}}{U} \times 100 [\%]$$

$$THDI = \frac{\sqrt{\sum_{i=2}^{40} I h_i^2}}{I h_1} \times 100, THD-R_I = \frac{\sqrt{\sum_{i=2}^{max} I h_i^2}}{I} \times 100 [\%]$$

where: U voltage TRMS (line-to-neutral or line-to-line)
 I current TRMS
 i order of the respective harmonic component
 Uh_i, Ih_i i-th harmonic of voltage and current
Power factor (of the fundamental harmonic components):

$$\cos \Delta\varphi_1$$

$$3\cos\Delta\varphi = \cos \left(\arctan \left(\frac{3Qfh}{3Pfh} \right) \right)$$

Reactive and reactive power of the fundamental harmonic component:

$$Pfh_1 = Ufh_1 \times Ifh_1 \times \cos\Delta\varphi_1, 3Pfh = Pfh_1 + Pfh_2 + Pfh_3$$

$$Qfh_1 = Ufh_1 \times Ifh_1 \times \sin\Delta\varphi_1, 3Qfh = Qfh_1 + Qfh_2 + Qfh_3$$

4.4 Symmetrical components

Voltage, current unbalance and negative sequence current is evaluated as a decomposition to the positive and negative sequence of fundamental harmonic:

$$unb_U = \frac{negative_sequence_component}{positive_sequence_component} \times 100\%$$

$$unb_I = \frac{negative_sequence_component}{positive_sequence_component} \times 100\%$$

$$\varphi_{nsl}$$

4.5 Aggregation and recording

Values are aggregated and stored in the archive in instrument memory according to the settings of the recording interval. By default all average values are recorded. Additionally extreme (maximum and minimum) values in each aggregation interval can be also recorded.

Aggregation of each interval starts at the beginning of the cycle (determined by RTC tick), following the expiration of the previous time interval as required by the standards - 61000-4-30 for class S. If all the available memory capacity for main archive is used than the archivation stops or restarts according to the Main Archive configuration. If *Cyclic Recording* is not selected, the instrument stops recording until it is reconfigured (and thus erased) by user or software. Otherwise the recording continues with the new measured values overwriting the oldest values in memory (FIFO). The device contains the “latest” set of records, which corresponds to the memory capacity of the actual device and configuration.

5 Technical Specifications

5.1 Basic Parameters

Auxiliary Voltage			
	model „U“	model „L“	model „S“
AC aux. voltage range, f: 40÷450 Hz	85 ÷ 275 V _{AC}	20 ÷ 50 V _{AC}	10 ÷ 26 V _{AC}
DC aux. voltage range	80 ÷ 350 V _{DC}	20 ÷ 75 V _{DC}	10 ÷ 36 V _{DC}
power supply	14 VA / 6 W		
overvoltage category	III		
pollution degree	2		
connection	isolated, polarity free		

Other Specifications	
operational temperature	- 20 to 60°C
storage temperature	- 40 to 80°C
operational and storage humidity	< 95 % - non-condensable environment
EMC – immunity	EN 61000 – 4 - 2 (4 kV / 8 kV) EN 61000 – 4 - 3 (10 V/m up to 1 GHz) EN 61000 – 4 - 4 (2 kV) EN 61000 – 4 - 5 (2 kV) EN 61000 – 4 - 6 (3 V) EN 61000 – 4 - 11 (5 periods)
EMC – emissions	EN 55011, class A EN 55022, class A (not for home use)
communication ports	RS-485 (1200 ÷ 921600 Bd), optional USB, Ethernet 10Base-T, M-bus
communication protocols	KMB, Modbus RTU and TCP, web server, DHCP
accuracy of RTC	± 2 seconds per day
capacity of RTC backup battery	> 5 years (without supply voltage applied)
protection class front panel whole instrument	IP 40 IP 20
dimensions front panel whole instrument	106 x 45 mm 106 x 90 x 58 mm
weight	max. 0.25 kg

5.2 Measured Quantities

Measured Quantities – Voltage	
Frequency	
f_{NOM} – nominal frequency	50 / 60 Hz
measuring range	40 ÷ 70 Hz
uncertainty	± 10 mHz
Voltage	
voltage input option	standard variant („230“)
U_{NOM} (U_{DIN})– rated voltage	180 ÷ 250 V _{AC}
measuring range line-to-neutral	8 ÷ 360 V _{AC}
measuring range line-to-line	–
intrinsic uncertainty ($t_A=23 \pm 2^\circ\text{C}$)	± 0.05 % of rdg ± 0.02 % of rng
temperature drift	± 0.03 % of rdg ± 0.01 % of rng / 10 °C
measurement category	300V CAT III
permanent overload	1500 V _{AC} (UL–N)
peak overload, 1 second	2300 V _{AC} (UL–N)
burden power (impedance)	< 0.03 VA ($R_i = 3.24 \text{ M}\Omega$)
Voltage Unbalance	
measuring range	–
measuring uncertainty	–
THDU	
measuring range	0 ÷ 20 %
measuring uncertainty	± 0.5
Harmonics (up to 50 th order)	
reference conditions	other harmonics up to 200 % of class 3 acc. to IEC 61000–2-4 ed.2
measuring range	10 ÷ 100 % of class 3 acc. to IEC 61000–2-4 ed.2
measuring uncertainty	twice the levels of class II acc. to IEC 61000–4-7 ed.2

Mains Signalling Voltage (with optional firmware module „RCS“ only)	
measuring range	0 ÷ 20 % U_{NOM}
frequency range	100 ÷ 3000 Hz
measuring uncertainty	twice the levels of class II acc. to IEC 61000–4-7 ed.2

Measured Quantities – Current, Temperature			
Current			
current input option	„Pxxx“	„X/4V“	„X/100mA“
I _{NOM} (I _B) – rated (basic) current	xxx AAC	xxx ADC	0.1 AAC
measuring range	0.0025 ÷ 1.2 xxx AAC	0.0025 ÷ 1.4 xxx ADC	0.00025 ÷ 0.12 AAC
intrinsic uncertainty (t _A =23 ±2 °C)	± 0.05 % of rdg ± 0.02 % of rng		
temperature drift	± 0.03 % of rdg ± 0.01 % of rng / 10 °C		
measurement category	150V CAT III	600V CAT III	600V CAT III
permanent overload	2 x I _{NOM}	10 V _{SS}	0.2 AAC
peak overload 1 second, maximum repetition frequency > 5 minutes	I _{NOM} < 35A: 20xI _{NOM} I _{NOM} = 35÷100A: 10xI _{NOM} I _{NOM} > 100 A: 5xI _{NOM}	50 V _{SS}	1 AAC
burden power (impedance)	<0.05 VA (R _i =0.7÷91 Ω)	<0.002 VA (R _i =10 kΩ)	< 0.005 VA (R _i < 0.5 Ω)
Current Unbalance			
measuring range	0 ÷ 100 %		
measuring uncertainty	± 1 % of rdg or ± 0.5		
Harmonics & Interharmonics (up to 50 th order)			
reference conditions	other harmonics up to 1000 % of class 3 acc. to IEC 61000–2-4 ed.2		
measuring range	500 % of class 3 acc. to IEC 61000–2-4 ed.2		
measuring uncertainty	I _h <= 10 % I _{NOM} : ± 1 % I _{NOM}		
	I _h > 10 % I _{NOM} : ± 1 % of rdg		
THDI			
measuring range	0 ÷ 200 %		
measuring uncertainty	THDI <= 100 %: ± 0.6		
	THDI > 100 %: ± 0.6 % of rdg		
Temperature (internal sensor, measured value affected by the instrument power dissipation)			
measuring range	- 40 ÷ 80 °C		
measuring uncertainty	± 2 °C		

Measured Quantities – Power, Power Factor, Energy	
Active / Reactive Power, Power Factor (PF), $\cos \varphi$ ($P_{NOM} = U_{NOM} \times I_{NOM}$)	
reference conditions "A": ambient temperature (t_A) U, I for active power, PF, $\cos \varphi$ for reactive power	$23 \pm 2 \text{ }^{\circ}\text{C}$ $U = 80 \div 120 \% U_{NOM}, I = 1 \div 120 \% I_{NOM}$ $PF = 1.00$ $PF = 0.00$
act. / react. power uncertainty	$\pm 0.5 \% \text{ of rdg } \pm 0.005 \% P_{NOM}$
PF & $\cos \varphi$ uncertainty	± 0.005
"reference conditions "B": ambient temperature (t_A) U, I for active power, PF, $\cos \varphi$ for reactive power	$23 \pm 2 \text{ }^{\circ}\text{C}$ $U = 80 \div 120 \% U_{NOM}, I = 2 \div 120 \% I_{NOM}$ $PF \geq 0.5$ $PF \leq 0.87$
act. / react. power uncertainty	$\pm 1 \% \text{ of rdg } \pm 0.01 \% P_{NOM}$
PF & $\cos \varphi$ uncertainty	± 0.005
temperature drift of powers	$\pm 0.05 \% \text{ of rdg } \pm 0.02 \% P_{NOM} / 10 \text{ }^{\circ}\text{C}$
Energy	
measuring range	6 „quadrants“, corresponds to U & I measuring ranges
active energy uncertainty	class 1 acc. to EN 62053 – 21
reactive energy uncertainty	class 2 acc. to EN 62053 – 23

5.3 Inputs and Outputs

Digital Outputs & Digital Input	
„R“-type (relay)	
type	N.O. contact
load rating	250 V _{AC} / 30 V _{DC} , 3 A
„I“-type (solid state, opto-MOS)	
type	Opto-MOS, unipolar
load rating	100 V _{DC} , 300 mA
dynamic parameters (pulse output): - pulse duration - gap duration - maximum frequency	S0 - compatible 50 ms ≥ 50 ms 10 Hz
Two Digital Inputs „I“	
type	optoisolated, unipolar
maximum voltage	30 V _{DC}
voltage for “logical 1”	> 10 V _{DC}
voltage for “logical 0”	< 3 V _{DC}
input current	3 mA @ 12V / 8 mA @ 24V
dynamic par. (pulse counter): - pulse/gap duration - maximum frequency	≥ 0.5 / 0.5 ms 1 kHz

5.4 Power Quality and Energy Management

5.4.1 IEC 61000-4-30, 61000-4-15, 61000-4-7:

Function characteristics according to IEC 61000-4-30 ed.2				
Function	Class	Uncertainty	Measuring range	Notes
frequency	S	± 10 mHz	40 ÷ 70 Hz	
magnitude of the supply	S	± 0.1 % U _{din}	20 ÷ 120 % U _{din}	
flicker	S	± 5 % of value or $\pm 0,05$	0.2 ÷ 20	2, 4)
dips and swells	S	± 0.5 % U _{din} , ± 1 cycle	5 ÷ 120 % U _{din}	2)
interruptions	S	± 1 cycle	unlimited	2)
unbalance	S	± 0.3 %	0.5 ÷ 10 %	
voltage harmonics & interharmonics	S	twice the levels of class II acc. IEC 61000-4-7 ed.2	10 ÷ 100 % class 3, 50 h acc. IEC 61000-2-4 ed.2	1)
mains signalling voltage	S	twice the levels of class II acc. IEC 61000-4-7 ed.2	0 ÷ 20 % U _{din}	1, 3)

1) ... according to IEC 61000-4-7

2) ... with optional firmware module „PQ S“

3) ... with optional firmware module „RCS“

4) ... class F3 according to IEC 61000-4-15 ed. 2.0

5.4.2 EN 50160

Power Quality acc. to EN 50160 (with optional firmware module „PQ S“ only)	
evaluation period	weekly
Interharmonics (up to 50th order)	
reference conditions	other harmonics up to 200 % of class 3 acc. to IEC 61000–2-4 ed.2
measuring range	10 ÷ 100 % of class 3 acc. to IEC 61000–2-4 ed.2
measuring uncertainty	twice the levels of class II acc. to IEC 61000–4-7 ed.2
Flicker (with optional firmware module „PQ S“ only)	
measuring range	0.2 ÷ 10
measuring uncertainty	±0.05 for Pst < 1, ± 5 % of rdg (acc. to IEC 61000–4-15)
Voltage Dips & Swells (with optional firmware module „PQ S“ only)	
measuring uncertainty	+/- 0.1 % of rdg ± +/- 0.05 % of rng
Voltage Interruptions (with optional firmware module „PQ S“ only)	
measuring uncertainty	+/- 0.2 % of rdg ± +/- 0.1 % of rng
duration measuring uncertainty	± 1 cycle
Mains Signalling Voltage	
evaluation period	3s interval

5.5 IEC 61557-12: Classification of the power monitoring instrument

Instrument characteristics according to IEC 61557-12	
power quality assessment function	PQI-S
classification according to par. 4.3	
direct voltage connection	SD
voltage connection via VT	SS
temperature according to par. 4.5.2.2	K55
humidity + altitude according to par. 4.5.2.3	< 95 % - noncondensation conditions < 3000 m
active power/energy function performance class	1

Function characteristics according to IEC 61557-12				
Model „Sxxx“ or „X/100mA“ with „xxx/100mA“ CTs, $I_{NOM} = xxx \text{ A}$, $U_{NOM} = 230 \text{ V}$				
Symbol	Function	Class	Measuring range	Notes
P	total effective power	0.5	$0 \div (331.2 * I_{NOM}) \text{ W}$	
Q_A, Q_V	total reactive power	1	$0 \div (331.2 * I_{NOM}) \text{ var}$	
S_A, S_V	total apparent power	0.5	$0 \div (331.2 * I_{NOM}) \text{ VA}$	
E_a	total active energy	0.5	$0 \div (331.2 * I_{NOM}) \text{ Wh}$	
E_{rA}, E_{rV}	total reactive energy	1	$0 \div (331.2 * I_{NOM}) \text{ varh}$	
E_{apA}, E_{apV}	total apparent energy	0.5	$0 \div (331.2 * I_{NOM}) \text{ VAh}$	
f	frequency	0.05	$40 \div 70 \text{ Hz}$	
I	phase current	0.2	$0.1 \div 1.2 * I_{NOM} \text{ AAC}$	
I_N	neutral current measured	0.2	$0.1 \div 1.2 * I_{NOM} \text{ AAC}$	
I_{Nc}	neutral current calculated	–	–	
U_{LN}	line-to-neutral voltage	0.2	$40 \div 280 \text{ VAC}$	
U_{LL}	line-to-line voltage	–	–	
P_{FA}, P_{FV}	power factor	0.5	$0 \div 1$	
P_{st}, P_{lt}	flicker	5	$0.4 \div 10$	2)
U_{dip}	voltage dips	0.5	$10 \div 230 \text{ VAC}$	2)
U_{swl}	voltage swells	0.5	$230 \div 280 \text{ VAC}$	2)
U_{tr}	transients overvoltage	–	–	
U_{int}	voltage interruption	1	$0 \div 10 \text{ VAC}$	2)
U_{nba}	voltage unbalance (amp.)	–	–	
U_{nb}	voltage unbalance (ph. & amp.)	–	–	
U_h	voltage harmonics	2	up to 50 th order	1)
THD_u	voltage total harmonic distortion (rel. to fund.)	2	$0 \div 20 \%$	1)
$THD-R_u$	voltage total harmonic distortion (rel. to RMS)	2	$0 \div 20 \%$	1)
I_h	current harmonics	2	up to 50 th order	1)
THD_i	current total harmonic distortion (rel. to fund.)	2	$0 \div 200 \%$	1)
$THD-R_i$	voltage total harmonic distortion (rel. to RMS)	2	$0 \div 200 \%$	1)
M_{sv}	mains signalling voltage	2	$0 \div 46 \text{ VAC}$	1, 3)

1) ... according to IEC 61000-4-7

2) ... with optional firmware module „PQ S“

3) ... with optional firmware module „RCS“

Function characteristics according to IEC 61557-12				
Model „S005“, $I_{NOM} = 5\text{ A}$, $U_{NOM} = 230\text{ V}$				
Symbol	Function	Class	Measuring range	Notes
P	total effective power	1	0 ÷ 2160 W	
Q_A, Q_V	total reactive power	2	0 ÷ 2160 var	
S_A, S_V	total apparent power	1	0 ÷ 2160 VA	
E_a	total active energy	1	0 ÷ 2160 Wh	
E_{rA}, E_{rV}	total reactive energy	2	0 ÷ 2160 varh	
E_{apA}, E_{apV}	total apparent energy	1	0 ÷ 2160 VAh	
f	frequency	0.05	40 ÷ 70 Hz	
I	phase current	0.2	0.5 ÷ 6 AAC	
I_N	neutral current measured	0.2	0.5 ÷ 6 AAC	
I_{Nc}	neutral current calculated	–	–	
U_{LN}	line-to-neutral voltage	0.1	40 ÷ 280 V _{AC}	
U_{LL}	line-to-line voltage	–	–	
P_{FA}, P_{FV}	power factor	0.5	0 ÷ 1	
P_{st}, P_{It}	flicker	5	0.4 ÷ 10	2)
U_{dip}	voltage dips	0.5	10 ÷ 230 V _{AC}	2)
U_{swl}	voltage swells	0.5	230 ÷ 280 V _{AC}	2)
U_{tr}	transients overvoltage	–	–	
U_{int}	voltage interruption	1	0 ÷ 10 V _{AC}	2)
U_{nba}	voltage unbalance (amp.)	–	–	
U_{nb}	voltage unbalance (ph. & amp.)	–	–	
U_h	voltage harmonics	2	up to 50 th order	1)
THD_u	voltage total harmonic distortion (rel. to fund.)	2	0 ÷ 20 %	1)
$THD-R_u$	voltage total harmonic distortion (rel. to RMS)	2	0 ÷ 20 %	1)
I_h	current harmonics	2	up to 50 th order	1)
THD_i	current total harmonic distortion (rel. to fund.)	2	0 ÷ 200 %	1)
$THD-R_i$	voltage total harmonic distortion (rel. to RMS)	2	0 ÷ 200 %	1)
M_{sv}	mains signalling voltage	2	0 ÷ 46 V _{AC}	1, 3)

1) ... according to IEC 61000-4-7

2) ... with optional firmware module „PQ S“

3) ... with optional firmware module „RCS“

Function characteristics according to IEC 61557-12 Model „X/4V“ with „xxx/4V“, $I_{NOM} = xxx \text{ A}$, $U_{NOM} = 230 \text{ V}$				
Symbol	Function	Class	Measuring range	Notes
P	total effective power	1	$0 \div (276 * I_{NOM}) \text{ W}$	
Q_A, Q_V	total reactive power	2	$0 \div (276 * I_{NOM}) \text{ var}$	
S_A, S_V	total apparent power	1	$0 \div (276 * I_{NOM}) \text{ VA}$	
E_a	total active energy	1	$0 \div (276 * I_{NOM}) \text{ Wh}$	
E_{rA}, E_{rV}	total reactive energy	2	$0 \div (276 * I_{NOM}) \text{ varh}$	
E_{apA}, E_{apV}	total apparent energy	1	$0 \div (276 * I_{NOM}) \text{ VAh}$	
f	frequency	0.05	$40 \div 70 \text{ Hz}$	
I	phase current	0.2	$0.1 \div 1 * I_{NOM} \text{ AAC}$	
I_N	neutral current measured	0.2	$0.1 \div 1 * I_{NOM} \text{ AAC}$	
I_{Nc}	neutral current calculated	–	–	
U_{LN}	line-to-neutral voltage	0.1	$40 \div 280 \text{ VAC}$	
U_{LL}	line-to-line voltage	–	–	
P_{FA}, P_{FV}	power factor	0.5	$0 \div 1$	
P_{st}, P_{It}	flicker	5	$0.4 \div 10$	2)
U_{dip}	voltage dips	0.5	$10 \div 230 \text{ VAC}$	2)
U_{swl}	voltage swells	0.5	$230 \div 280 \text{ VAC}$	2)
U_{tr}	transients overvoltage	–	–	
U_{int}	voltage interruption	1	$0 \div 10 \text{ VAC}$	2)
U_{nba}	voltage unbalance (amp.)	–	–	
U_{nb}	voltage unbalance (ph. & amp.)	–	–	
U_h	voltage harmonics	2	up to 50 th order	1)
THD_u	voltage total harmonic distortion (rel. to fund.)	2	$0 \div 20 \%$	1)
$THD-R_u$	voltage total harmonic distortion (rel. to RMS)	2	$0 \div 20 \%$	1)
I_h	current harmonics	2	up to 50 th order	1)
THD_i	current total harmonic distortion (rel. to fund.)	2	$0 \div 200 \%$	1)
$THD-R_i$	voltage total harmonic distortion (rel. to RMS)	2	$0 \div 200 \%$	1)
M_{sv}	mains signalling voltage	2	$0 \div 46 \text{ VAC}$	1, 3)

1) ... according to IEC 61000-4-7

2) ... with optional firmware module „PQ S“

3) ... with optional firmware module „RCS“

6 Maintenance, Service, Warranty

Maintenance: the SMC 118 power analyzer does not require any maintenance during its operation. For reliable operation it is only necessary to meet the operating conditions specified and not expose the instrument to violent handling and contact with water or chemicals which could cause mechanical damage.

The lithium cell built in the instrument can backup a real time circuit for more than 5 years without power supply, at average temperature 20°C and load current in the instrument less than $10\text{ }\mu\text{A}$. If the cell is empty, it is necessary to ship the instrument to the manufacturer for battery replacement.

Service: in the case of failure or a breakdown of the product, you should contact the supplier at their address:

KMB Systems, s. r. o.
Tř. dr. M. Horákové 559
460 05 Liberec 7
Czech Republic
Tel. 485 130 314, Fax 482 739 957
E-mail: kmb@kmb.cz, Web: www.kmb.cz

The product must be in proper packaging to prevent damage during transit. A description of the problem or its symptoms must be delivered together with the product.

If a warranty repair is claimed, the warranty certificate must be sent in. In case of an out-of-warranty repair you have to enclose an order for the repair.

Warranty certificate: warranty period of 24 months from the date of purchase is provided for the instrument, however, no longer than 30 months from the day of dispatch from the manufacturer. Problems in the warranty period, provably because of faulty workmanship, design or inconvenient material, will be repaired free of charge by the manufacturer or an authorized servicing organization.

The warranty ceases even within the warranty period if the user makes unauthorized modifications or changes to the instrument, connects it to out-of-range quantities, if the instrument is damaged due to ineligible or improper handling by the user, or when it is operated in contradiction with the technical specifications presented.

Type of product:	SMC 118	Serial number:
Date of dispatch:	Final quality inspection:
		Manufacturer's seal:
Date of purchase:	Supplier's seal: